

CELEBRATING



1994 - 2024

VIDEO MOUNT PRODUCTS

PRODUCT CATALOG

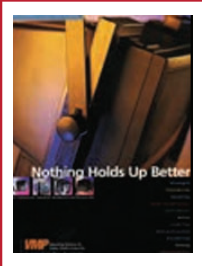
MOUNTING SOLUTIONS FOR AV, COMMUNICATIONS & SECURITY



CELEBRATING

30
years

1994 - 2024

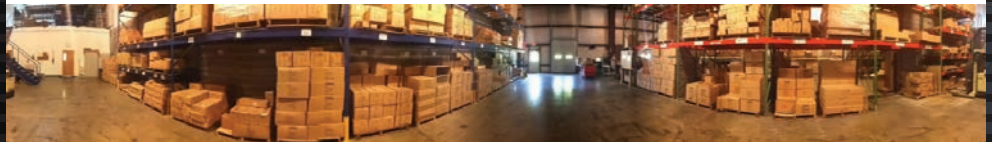


2024 marks 30 YEARS since we started VMP and published our first catalog... a modest 2-pager that held a whopping 6 products! Some of you have been using our products since the beginning and others are friends and partners that we have earned along the way. All of you are the driving force behind our success and the biggest reason that we have been able to last through the many trials and tribulations of the past three decades! As you look through our catalog, you'll see plenty of new products, but you'll also notice that we have stayed true to our philosophy of delivering a concise, but flexible product line that offers reliability and exceptional value.

Alfred North Whitehead once said *"No one who achieves success does so without acknowledging the help of others. The wise acknowledge this help with gratitude."* We always welcome the opportunity to earn your business and we will do everything we can to prove ourselves strong partners and worthy suppliers, each and every day.

With an attitude of great gratitude,

Thank you for choosing Video Mount Products!



KEEP US ON YOUR RADAR!

Professionals everywhere choose VMP for A/V, Communications and Security installations. If you're not one of them, there's no better time to learn more about our innovative product line.

Scan the QR Code to learn more.



4 EQUIPMENT RACKS & CABINET ENCLOSURES

- 4 Floor Cabinets
- 7 Floor Cabinet Accessories
- 8 Vertical Wall Cabinets
- 9 Wall Cabinets
- 11 Wall Cabinet Accessories
- 12 Open Frame Floor Racks
- 13 Resources
- 14 Wall Racks
- 16 Equipment Rack Shelves & Accessories

22 TV & DISPLAY MOUNTS

- 22 Articulating Mounts
- 24 Tilt Mounts
- 26 Flush Mounts
- 28 Ceiling Mounts
- 31 Ceiling Mount Accessories
- 34 Specialized Mounts & Adaptors

36 LOCKBOXES

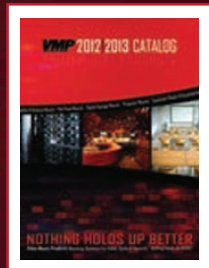
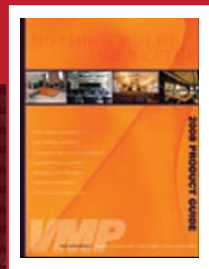
- 36 Lockboxes
- 37 Lockbox Accessories

38 SATELLITE & ANTENNA MOUNTS

40 AV MOUNTS & ACCESSORIES

42 NOTES & INDEX

WARNING: The installer of these products must verify that the mounting surface, ceiling or wall, will safely support the combined weight of all attached equipment and hardware. Video Mount Products will not be held liable for the improper use or installation of its products.



The **EREN Series** is VMP's line of professional equipment rack enclosures. Fully assembled and welded, these units simplify on site installation. Each unit comes standard with a tempered glass front door, but you can customize yours with our door selection as well as a number of other helpful accessories.



EREN-18

19" Equipment Rack Enclosure – 18U

- Welded steel construction
- Ships fully assembled
- Overall Dimensions - 39" H x 23.6" W x 23.6" D
- Usable Depth - 19.875"
- Works with standard 19" rack equipment & accessories
- Preloaded with 3 ER-S2UV (shelves) and 3 ER-2B (blanks)
- Reversible tempered glass front door
- Rails have numbered spaces with standard 10-32 threading
- Double swing steel rear doors – opens from center
- Adjustable front and rear rails
- Vented top and bottom
- Pre-installed cooling fans (2)
- Top and bottom cable routing knockouts
- Removable locking side panels
- Casters and leveling feet
- Load capacity – 1,000 lbs
- Black powder coat finish



EREN-18E SAME AS ABOVE WITHOUT SHELVES & BLANKS



EREN-27

19" Equipment Rack Enclosure – 27U

- Welded steel construction
- Ships fully assembled
- Overall Dimensions - 54.8"H x 23.6"W x 23.6"D
- Usable Depth - 19.875"
- Works with all standard 19" rack equipment and accessories
- **Preloaded** with 5 ER-S2UV(shelves) and 5 ER-2B(blanks)
- Rails have numbered spaces with standard 10-32 threading
- Reversible tempered glass front door
- Double swing steel rear doors – opens from center
- Adjustable front and rear rails
- Vented top and bottom
- Pre-installed cooling fans (2)
- Top and bottom cable routing knockouts
- Removable locking side panels
- Casters and leveling feet
- Load capacity – 1,000 lbs
- Black powder coat finish



EREN-27E SAME AS ABOVE WITHOUT SHELVES & BLANKS

EREN-42E

19" Equipment Rack Enclosure – 42U

- Welded steel construction
- Ships fully assembled
- Overall Dimensions - 81.1"H x 23.6"W x 23.6"D
- Usable Depth - 19.875"
- Works with all standard 19" rack equipment and accessories
- Rails have numbered spaces with standard 10-32 threading
- Reversible tempered glass front door
- Double swing steel rear doors – opens from center
- Adjustable front and rear rails
- Vented top and bottom
- Pre-installed cooling fans (2)
- Top and bottom cable routing knockouts
- Removable locking side panels
- Casters and leveling feet
- Load capacity – 1,000 lbs
- Black powder coat finish



EREN-27E1K

19" Equipment Rack Enclosure – 27U - 1000mm Deep

- Welded steel construction
- Ships fully assembled
- Overall Dimensions - 54.8"H x 23.6"W x 39.4"D
- Usable Depth - 19.875"
- Works with all standard 19" rack equipment and accessories
- Rails threaded with standard 10-32 threading
- Numbered rack spaces
- Reversible tempered glass front door
- Double swing steel rear doors – opens from center
- Adjustable front and rear rails
- Vented top and bottom
- Pre-Installed cooling fans (4 Fan Tray)
- Top and bottom cable routing knockouts
- Removable locking side panels
- Casters and leveling feet
- Load capacity – 1,300 lbs
- Black powder coat finish



EREN-42E1K

19" Equipment Rack Enclosure – 42U - 1000mm Deep

- Welded Steel Construction
- Ships Fully Assembled
- Overall Dimensions - 81.1"H x 23.6"W x 39.4"D
- Usable Depth – 33"
- Works with all standard 19" rack equipment and accessories
- Rails threaded with standard 10-32 threading
- Numbered rack spaces
- Reversible tempered glass front door
- Double swing steel rear doors – opens from center
- Adjustable front and rear rails
- Vented top and bottom
- Pre-Installed cooling fans (4 Fan Tray)
- Top and bottom cable routing knockouts
- Removable locking side panels
- Casters and leveling feet
- Load Capacity 1,300 lbs.
- Black powder coat finish





ERENPD

Perforated Steel Door

This perforated door works to reduce heat build up by providing enhanced ventilation. It also allows for visual observation of LED's and monitoring lights. The doors are designed for the EREN Series and keyed the same as existing doors for the EREN Series.

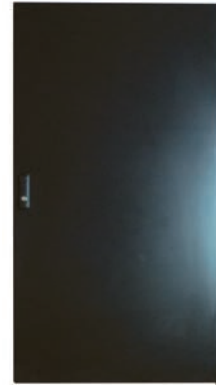


- ERENPD-18 | FITS ALL 18U CABINETS**
- ERENPD-27 | FITS ALL 27U CABINETS**
- ERENPD-42 | FITS ALL 42U CABINETS**

ERENSD

Solid Steel Door

This optional solid steel door provides added security to your equipment cabinet by preventing visual access to the cabinet contents. The doors are designed for the EREN Series and keyed the same as existing doors for the EREN Series.



- ERENSD-18 | FITS ALL 18U CABINETS**
- ERENSD-27 | FITS ALL 27U CABINETS**
- ERENSD-42 | FITS ALL 42U CABINETS**

ERENDSSD

Double Swing Steel Door

This optional double swing steel door allows for less space in front of or behind rack to open. The doors are designed for the EREN Series and keyed the same as existing doors for the EREN Series.



- ERENDSSD-18 | FITS ALL 18U CABINETS**
- ERENDSSD-27 | FITS ALL 27U CABINETS**
- ERENDSSD-42 | FITS ALL 42U CABINETS**

ERENVCM SERIES

Vertical Cable Management

- ABS finger ducting protects cables from damage
- Front cover removable for easy routing of cables
- Cover opens left or right for convenient access
- Steel and ABS construction
- Black finish

- ERENVCM-27 | 27U RACK SPACES**
Compatible w/ EREN-27, EREN-27E, and EREN-271K
- ERENVCM-42 | 42U RACK SPACES**
Compatible w/ EREN-42E, and EREN-42E1K



EREN-BP

Cable Entry Brush Plate

- Fits all EREN Series enclosures
- Dense Nylon Brush material
- Promotes proper airflow and circulation
- Helps prevent dust/dirt from entering unit
- Black powder coat finish



ERVWC-5U20

Vertical Wall Cabinet - 5U

- Ships Fully Assembled
- Usable Depth - 20"
- Overall Dimensions: 28.8"H x 25.6"W x 9.75" D
- Rails adjust to accommodate mounting depth
- Reversible front door - Vented for cooling
- Separate locking hinged top and hinged body
- 1" and 1.75" top and bottom cable ports
- Threaded Mounting holes - M6 or 12-24
- Marked rack spaces
- Slide out 2U bracket for patch panels
- Mounting locations for fans (fans not included)
- Load Capacity 150 lbs. | Black Finish

ERVWC-5U36 | SAME AS ABOVE EXCEPT 36" USABLE DEPTH AND OVERALL DIMENSIONS 42.75"H X 25.6"W X 9.75"D



ERVWC2FANKIT

2 Fan Kit for 5U Vertical Wall Cabinets

- All fans wired to a common plug
- Maximum combined airflow - 180 CFM
- Noise level - 46dBA | Works with standard 110V AC
- Power consumption - .38A/40W
- Includes mounting hardware | Black finish



ERVWC-2U20

Vertical Wall Cabinet - 2U

- Ships Fully Assembled
- Usable Depth - 20"
- Overall Dimensions: 28.7"H x 25.3"W x 4.5" D
- Rails adjust to accommodate mounting depth
- Reversible front door - Vented for cooling
- Locking hinged body
- 1" and 1.6" top and bottom cable ports
- Threaded Mounting holes - M6 or 12-24
- Marked rack spaces
- Slide out 1U bracket for patch panels
- Load Capacity 150 lbs. | Black Finish

ERVWC-2U36 | SAME AS ABOVE EXCEPT 36" USABLE DEPTH AND OVERALL DIMENSIONS 42.6"H X 25.3"W X 4.5"D





ERWEN-6E

19" Hinged Wall Equipment Rack Enclosure - 6U

- Welded steel construction | Ships fully assembled
- Works with all standard 19" rack equipment and accessories
- Overall Dimensions - 14.5"H x 24.3"W x 21.9" D
- Usable Depth - 16"
- Rails have numbered spaces with standard 10-32 threading
- Adjustable front and rear rails | Vented top and bottom
- Top and bottom cable routing knockouts
- Reversible hinged tempered glass front door
- Removable hinged back panel & locking side panels
- Load capacity - 120 lbs | Black powder coat finish



ERWEN-9E

19" Hinged Wall Equipment Rack Enclosure - 9U

- Welded steel construction | Ships fully assembled
- Works with all standard 19" rack equipment and accessories
- Overall Dimensions - 19.9"H x 24.3"W x 21.9" D
- Usable Depth - 16"
- Rails have numbered spaces with standard 10-32 threading
- Adjustable front and rear rails
- Vented top and bottom
- Top and bottom cable routing knockouts
- Reversible hinged tempered glass front door
- Removable hinged back panel & locking side panels
- Load capacity - 120 lbs | Black powder coat finish



ERWEN-12E

19" Hinged Wall Equipment Rack Enclosure - 12U

- Welded steel construction | Ships fully assembled
- Works with all standard 19" rack equipment and accessories
- Overall Dimensions - 25.3"H x 24.3"W x 21.9" D
- Usable Depth - 16"
- Rails have numbered spaces with standard 10-32 threading
- Adjustable front and rear rails
- Vented top and bottom
- Top and bottom cable routing knockouts
- Reversible hinged tempered glass front door
- Removable hinged back panel
- Removable locking side panels
- Load capacity - 120 lbs | Black powder coat finish



ERWEN-15E

19" Hinged Wall Equipment Rack Enclosure - 15U

- Welded steel construction | Ships fully assembled
- Works with all standard 19" rack equipment and accessories
- Overall Dimensions - 30.5"H x 24.3"W x 21.9" D
- Usable Depth - 16"
- Rails have numbered spaces with standard 10-32 threading
- Adjustable front and rear rails | Vented top and bottom
- Top and bottom cable routing knockouts
- Reversible hinged tempered glass front door
- Removable hinged back panel & locking side panels
- Load capacity - 120 lbs | Black powder coat finish



ERWEN-12E750

19" Hinged Wall Equipment Rack Enclosure - 12U/750mm Deep

- Welded steel construction | Ships fully assembled
- Overall Dimensions - 25.3"H x 24.3"W x 29.625" D
- Usable Depth - 24"
- Works with all standard 19" rack equipment & accessories
- Rails have numbered spaces w/ standard 10-32 threading
- Adjustable front and rear rails
- Vented top and bottom | Stabilizing hasp
- Top and bottom cable routing knockouts
- Reversible hinged tempered glass front door
- Removable hinged back panel & locking side panels
- Load capacity - 120 lbs | Black powder coat finish



ERWEN-F22E

19" Fixed Wall Equipment Rack Enclosure - 22U

- Welded steel construction
- Ships fully assembled
- Overall Dimensions - 42.6"H x 23.6"W x 23.5" D
- Usable Depth - 19.875"
- Works with all standard 19" rack equipment & accessories
- Rails have numbered spaces w/ standard 10-32 threading
- Adjustable front and rear rails
- Vented top and bottom
- Top and bottom cable routing knockouts
- Reversible hinged tempered glass front door
- Removable locking side panels
- Load capacity - 150 lbs | Black powder coat finish



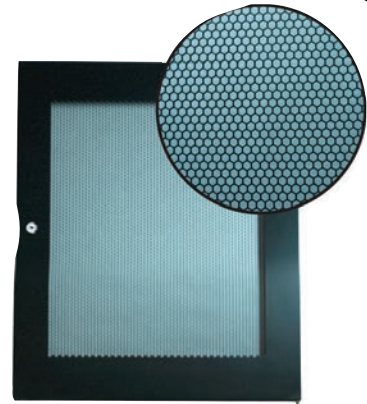


ERWENPD

Perforated Steel Door

This optional perforated door works to reduce heat build up by providing enhanced ventilation. It also allows for visual observation of LED's and monitoring lights. The doors are designed for the ERWEN Series and keyed the same as existing doors for the ERWEN Series.

ERWENPD-6 | ERWENPD-9 | ERWENPD-12 | ERWENPD-15 | ERWENPD-F22E



ERWENSSD

Solid Steel Door

This optional solid steel door is designed for the ERWEN Series and keyed the same as existing doors for the ERWEN Series.

ERWENSSD-6 | ERWENSSD-9 | ERWENSSD-12 | ERWENSSD-15 | ERWENSSD-F22E



ERWEN2FANKIT

2 Fan Kit for ERWEN Series Wall Cabinets

- All fans wired to a common plug | Noise level – 46dBA
- Maximum combined airflow – 180 CFM
- Works with standard 110V AC | Power consumption - .38A/40W
- Includes mounting hardware | Black finish



ERWENF22E-2FANKIT

2 Fan Kit for ERWENF22E

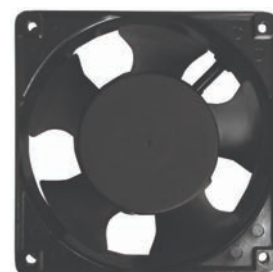
- All fans wired to a common plug
- Maximum combined airflow – 180 CFM
- Noise level – 46dBA | Works with standard 110V AC
- Power consumption - .38A/40W



ERWEN-FAN

Fan for ERWEN Series Cabinets

- Max air flow – 96 CFM | Max noise – 43 dBA
- Includes power cord and mounting hardware
- Power Consumption - .28A/25W
- Works with standard 110 VAC | Black Finish



ER-1

19" Open Frame Equipment Rack - 40U

- EIA compliant
- Overall Dimensions: 72.25"H x 20.3"W x 20"D
- Rail height – 71" | Racking height – 40U
- Standard 10-32 threading | Includes 32 rack screws
- Steel construction
- Load capacity – 400 lbs evenly distributed
- Black static resistant powder coat finish



ER-184

19" Open Frame Equipment Rack - 45U

- EIA compliant
- Overall Dimensions: 86"H x 20.3"W x 20"D
- Rail height – 84" | Racking height – 45U
- Standard 10-32 threading | Includes 32 rack screws
- Steel construction
- Load capacity – 400 lbs evenly distributed
- Black static resistant powder coat finish



ER-148

19" Open Frame Equipment Rack - 27U

- EIA compliant
- Overall Dimensions: 49.25"H x 20.3"W x 20"D
- Rail height – 48" | Racking height – 27U
- Standard 10-32 threading | Includes 32 rack screws
- Steel construction
- Load capacity – 400 lbs evenly distributed
- Black static resistant powder coat finish



ER SERIES EXPANSION KIT

2 Post Expansion Kits for ER-1, ER-184, ER-148

- Standard 10-32 threading in expansion posts
- Includes side stabilizing bars (ER-1 & ER-184)
- Steel construction
- Black static resistant powder coat finish

ER-1-4PKIT | ER-184-4PKIT | ER-148-4PKIT



Kit Assembly with ER-1/ER-184



Kit Assembly with ER-148





SUBSCRIBE TO OUR MONTHLY NEWSLETTER...

It's EASY! Scan the QR code or visit us online to learn about the latest in mounting technology and more about what's going on at VMP!



OUR STAFF IS YOUR NUMBER ONE RESOURCE.

Call our toll free line and speak directly to one of our team members with no prompts! 877.281.2169



NEED HELP CHOOSING THE RIGHT MOUNT FOR YOUR APPLICATION?

Check out the innovative VideoMount Finder™ tool at: chooseamount.com



FIND US ON FACEBOOK!

Find us on Facebook, and stay up to date with new products, what shows you can visit us at, and much more.



LINK UP WITH US ON LINKEDIN!

Find us on LinkedIn, and stay up to date with new products, what shows you can visit us at, and much more.

VMP'S FOREVER WARRANTY

What exactly does 'lifetime warranty' mean? Each manufacturer may have a different definition. The life of the product it is mounting? The owner's life? Putting a lifespan, such as 10 years, on their products and after that period of time it is no longer under warranty? Quite simply, we have so much confidence in our products, we have warranted nearly all of them beyond anyone's or anything's lifetime and we are not putting a lifespan on them.



Our *Forever Warranty* covers the entire VMP product line, except for fans, which carry a 90 day warranty. Forever Warranty coverage remains in effect for as long as the product is used, which can be infinite, so long as the product is being used to its specifications. VMP offers a full replacement guarantee if any one of its products should fail at any time after purchase (except for the fans referenced above).

Our industry best *Forever Warranty* is just another way VMP is making our customers feel as confident as possible in their choice of products. When customers purchase and use any VMP product or accessory, they know they are getting the most durable products, the most reliable warranty and the best backing by any company in the business. NOTHING HOLDS UP BETTER!





ER-W24

Swing Gate Wall Rack - 13U

- EIA compliant
- Overall Dimensions: 28.1" H x 21.1" W x 22.85" D
- Usable depth - 19"
- Fixed wall plate allows easy installation and removal of populated rack
- Opens from either the left or the right side
- Standard 10-32 threading
- Steel and aluminum construction
- Load capacity - 100 lbs evenly distributed
- Black static resistant powder coat finish

* Innovative lift on/off design allows for one man install



VWS

Vented Wall Shelf

- Internal dimensions - 20.5" W x 17" D x 17" H
- Convenient quick-slide assembly
- Five cable supply locations
- Wall or backboard mount
- Load capacity - 200 lbs
- Black static resistant powder coat finish





ERWR SERIES

Wall Mount Equipment Racks

The ERWR Series of open frame wall racks is a smart solution for applications anywhere floor space is limited. Offered in 8U and 12U versions, these wall racks accommodate virtually any 19" rack mountable security, AV and telecommunications components.

- Numbered Rack Spaces
- Standard 10-32 threading
- 18" depth for added versatility
- EIA Compliant | Steel Construction
- Cable tie down slots in top and bottom side supports
- Ships knocked down for standard ground service
- Load Capacity 65 lbs. | Black powder coat finish

ERWR12 | OVERALL DIMENSIONS - 24.86"H X 19.6"W X 18"D

ERWR8 | OVERALL DIMENSIONS - 17.86"H X 19.6"W X 18"D



ERVR SERIES

Wall Mount Vertical Equipment Racks

For installation applications that lack the space for conventional floor or wall cabinets, the ERVR Series is a compact solution that provides plenty of versatility. Offered in 1U, 2U and 4U configurations. Rack mountable equipment, of any depth, can be installed vertically or horizontally to best accommodate your workplace.

- Equipment can be wall mounted vertically or under a desk horizontally
- Accommodates rack equipment of any depth
- Standard 10-32 threading
- Fold out design reduces packaging and shipping costs
- Steel Construction
- Load Capacity – 150 lbs. | Black finish

ER-VR4U | OVERALL DIMENSIONS - 4.9"H X 19"W X 7.5"D

ER-VR2U | OVERALL DIMENSIONS - 4.9"H X 19"W X 4"D

ER-VR1U | OVERALL DIMENSIONS - 4.9"H X 19"W X 2.2"D



ER-S1UV

Vented 1U Rack Shelf

- Fits components up to 17.375" wide
- Racking height – 1U (1.75") | Tray depth – 14.75"
- Convenient tie down slots in rear of tray
- Includes 10-32 and 12-24 rack screws
- Load capacity – 50 lbs
- Black static resistant powder coat finish



ER-S2U

2U Rack Shelf

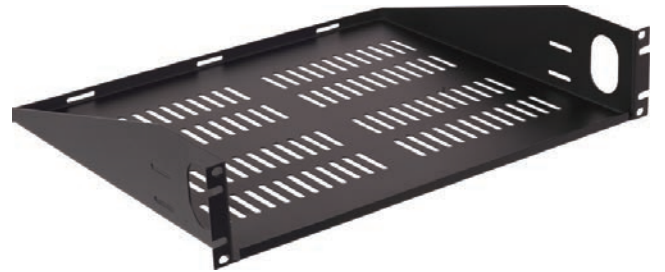
- Fits components up to 17.375" wide
- Racking height – 2U (3.5") | Tray depth – 14.75"
- Convenient tie down slots in rear of tray
- Includes 10-32 and 12-24 mounting screws
- Load capacity – 50 lbs
- Black static resistant powder coat finish



ER-S2UV

Vented 2U Rack Shelf

- Fits components up to 17.375" wide
- Racking height – 2U (3.5") | Tray depth – 14.75"
- Convenient tie down slots in rear of tray
- Includes 10-32 and 12-24 rack screws
- Load capacity – 50 lbs
- Black static resistant powder coat finish



ER-S1

Economy Rack Shelf

- Fits components up to 17" wide
- Two space racking height (2.6")
- Tray depth – 12.5"
- Includes 10-32 and 12-24 mounting screws
- Load capacity – 40 lbs
- Black powder coat finish





ER-S1V

Vented Economy Rack Shelf

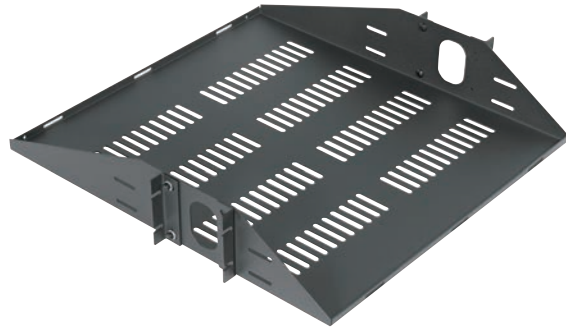
- Fits components up to 17" wide
- Two space racking height (2.6")
- Tray depth – 12.5"
- Includes 10-32 and 12-24 mounting screws
- Load capacity – 40 lbs
- Black powder coat finish



ER-S2CM

Vented 2U Center Mount Rack Shelf

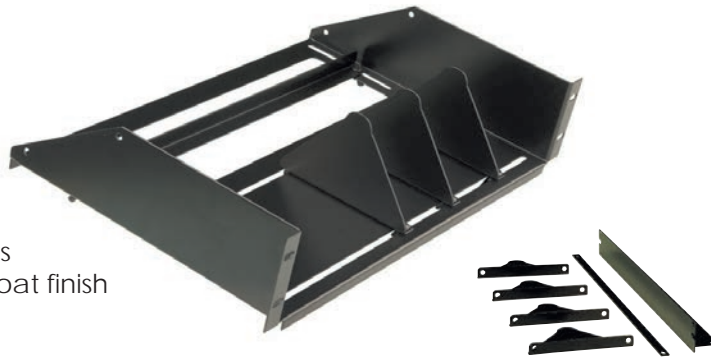
- Fits components up to 17.375" wide
- Racking height – 2U (3.5") | Tray depth – 19"
- Convenient tie down slots in front and rear of tray
- Includes 10-32 and 12-24 mounting screws
- Load capacity – 50 lbs
- Black static resistant powder coat finish



ER-8RSA

Adjustable Eight Receiver Rack Shelf

- Accommodates up to eight receivers
- Adjusts left to right and front to back
- Includes front and top anti-roll bars
- Includes 10-32 and 12-24 mounting screws
- Load capacity – 50 lbs | Black powder coat finish
- **US Patent # 7,850,022**



Additional Parts Include: Front and top anti-roll bars and additional receiver separators

** Additional parts*

ER-SS1U

Rack Mounted Sliding Shelf - 1U

- Optional (included) 4 post mounting ears adjust – 17.5" - 20"
- Shelf "locks" into place when fully closed to prevent drifting
- Maximum extension – 13.8" | Closes flush when not in use
- Tray dimension – 16.3" W x 13.8" D x 1.75" H (1 RU)
- Includes 10-32 and 12-24 mounting screws
- Load capacity – 35 lbs
- Black static resistant powder coat finish



*** Can be used as a storage drawer when inverted**

ER-S1U4P

Vented 1U Adjustable Four Post Rack Shelf

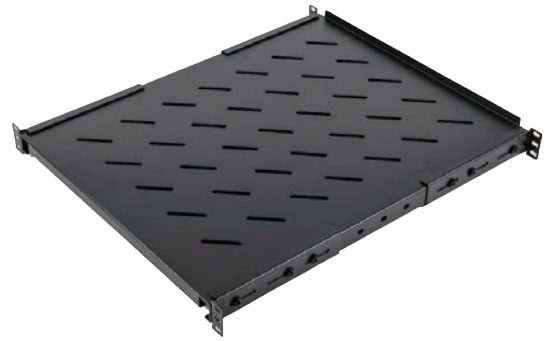
- Fits components up to 16.85" wide (17.4" when shelf is flipped over)
- 1U Racking height (1.75")
- Tray depth adjustable from 14.75" to 25"
- Includes 10-32 and 12-24 rack screws
- Load capacity – 200 lbs. (When attached to all 4 Posts)
- Black static resistant powder coat finish



ER-S1U4P-2240

Vented 1U Adjustable Four Post Rack Shelf - 22"-40"

- Fits components up to 16.86" wide
- Racking height – 1U
- Tray depth – 21.5" – 39.5"
- Includes 10-32 and 12-24 rack screws
- Load capacity – 150 lbs (When attached to all 4 Posts)
- Black static resistant powder coat finish



ER-LCD1017

LCD Monitor Rack Mount

- Holds monitors 10" – 17" | Racking height – 9U
- Recesses monitor into rack
- Accommodates monitors w/ 75mm & 100mm VESA hole patterns
- Includes 10-32 and 12-24 rack screws
- Load capacity - 50 lbs
- Black static resistant powder coat finish



* **Can be inverted to hold monitors up to 23"**

ER-HWB1

Hinged Wall Bracket - 1U

- Right or left hand opening | 4" depth
- Includes 10-32 and 12-24 mounting screws
- Black powder coat finish
- Provides easy access to the back of mounted components



ER-HWB2 - SAME AS ABOVE EXCEPT 2U



ERHCM-1

Horizontal Cable Manager - 1U

- Fits standard 19" racks and cabinets
- Contoured "Finger Duct" spaced 1.4"
- Allows for easy cable routing, adds, changes and moves
- Generous pass through ports allows front to back cabling
- Convenient snap-on cover opens up/down
- Includes 12-24 and 10-32 rack screws
- Black powder coat finish



ERHCM-2 - SAME AS ABOVE EXCEPT 2U

ER-DRCM2

D-Ring Cable Manager - 2U

- Large slotted metal rings manage all types and sizes of wire and cable
- Easy to install on equipment racks
- Includes 10-32 and 12-24 mounting screws
- Black powder coat finish



ER-DRCM1 - SAME AS ABOVE EXCEPT 1U

With numerous lacing slots, our cable lacing bars are designed to provide important strain relief to your cabling and connections, while also promoting good bend radius to help maintain your data speeds.

ERLBAR-RA

Right Angle 2" Offset Cable Lacing Bar (Shown)

- Fits standard 19" racks
- 2" Right angle offset for added depth
- Provides valuable cable management
- Multiple cable lacing points
- Includes 10-32 and 12-24 rack screws
- Black powder coat finish



ERLBAR-10 - BASIC CABLE LACING BAR (10 PACK)

EQUIPMENT RACK LOCKBOXES

The **DVR-LB3** & **DVR-MB1** are lockboxes designed for 19" equipment racks as well as for stand alone use. The DVR-MB1 is small and versatile, making it perfect for both mobile or rack mount applications, while the DVR-LB3 is great for more traditional lockbox and storage applications.

DVR-LB3

FULL DESCRIPTIONS AVAILABLE ON PAGE 36

DVR-MB1

FULL DESCRIPTIONS AVAILABLE ON PAGE 36

ER-2BV

Blank Filler Panel - Vented - 2U

- Tempered 16 gauge steel | Vented for enhanced air flow
- Black static resistant powder coat finish



ER-1BV - SAME AS ABOVE EXCEPT 1U

ER-1B

1U Blank Panel (Shown TOP)

- Tempered 16 gauge steel
- Black static resistant powder coat finish

ER-2B | 2U BLANK PANEL - 3.5" (SHOWN MIDDLE)

ER-4B | 4U BLANK PANEL - 7" (SHOWN BOTTOM)

ER-8B | 8U BLANK PANEL - 14" (NOT SHOWN)



ER-BP2

Equipment Rack Brush Panels - 2U

- Fits standard 19" racks and cabinets
- Dense nylon brush material
- Promotes proper airflow and circulation
- Helps prevent dust/dirt from entering cabinet
- Includes 10-32 and 12-24 rack screws
- Black powder coat finish



ER-BP1 - SAME AS ABOVE EXCEPT 1U

ERENPS6

Rack Mount 6 Outlet Power Strip - 1U

- Basic 6 Outlet PDU | Fits EIA Standard 19" racks
- Rated Voltage: 125VAC - 50/60HZ
- Max. Input: 15A | Max. Rated Power: 1875W
- Input: 16AWG - 53" Power Cord - NEMA 5-15P
- Output Connection: 6 Outlet NEMA 5-15R
- High Impact Black Metal Housing
- Switch Cover to prevent accidental on/off



ER-CASTERS

Rack Casters (Set of 4)

- Heavy duty casters attach to the ER-1, ER-148 or ER-184
- Hole pattern - 2.375" x 3.375"
- Max weight capacity of rack with casters - 400 lbs | Hardware included





EREN-3FANKIT

Rack Mount Three Fan Kit - 3U

- Fits standard 19" racks and cabinets
- All fans wired to a common plug
- Power consumption -.38A/40W
- Maximum combined airflow – 270 CFM
- Works with standard 110V AC
- Includes 10-32 rack screws | Black finish



ER-TCFAN1

Temperature Controlled Cooling Fan Kit - 1U

- Fits Standard 19" racks and cabinets
- Max. Combined Air Flow – 150 CFM
- Fans are wired to a common plug
- Lighted On/Off rocker switch | 53" Power Cord
- Includes 10-32 and 12-24 mounting screws
- Overall Dimensions – 19"W x 6.7"D x 1.75"H
- Black static resistant powder coat finish



ER-LIGHT-118

Rack Rail Mount LED Gooseneck Light

- 18" Fully flexible Gooseneck Light w/12" Pigtail
- 1" x 1" x 3" Chassis w/ Rotary Switch
- Red/White Array Circuit Board | Left or Right Rack Rail Mount Bracket
- 12 Volt Operation | Power Supply Included
- 398 Lux Light Output @12" | Color Temp: 4000K
- Average Life @ 12V: 60,000 Hours | Wattage: 1.5W | Draw @12V: 150mA



ERENSL

Side Panel Lock Kit w/ 2 Keys

- Works for both floor and wall enclosures (EREN series and ERWEN series)
- Keyed the same as the front and back locks for ERWEN series wall enclosures



ERENSL-2 | SAME AS ABOVE EXCEPT SET OF 2

ER-RS1032-50

10-32 Rack Screws



A set of 50 durable heat treated rack screws .75" long w/ a classic Phillips trim head. Nylon washers included.

ER-RS1224-50

12-24 Rack Screws



A set of 50 durable heat treated rack screws .75" long w/ a classic Phillips trim head.

ER-RS1032-100 | SAME AS ABOVE EXCEPT 100

ER-RS1224-100 | SAME AS ABOVE EXCEPT 100

HELPFUL HINT: The suggested TV size ranges provided are primarily a guide and not meant to be the final deciding factor when choosing a mount. Check your TV manufacturers specifications for the VESA mounting hole pattern and weight of the TV to help determine all your options.

FP-XLWAB

Large Flat Panel Articulating Mount

- Holds 42" – 90" flat panels
- Max. mounting hole pattern – 600mm x 400mm
- Low profile depth of 2.8" when collapsed and 25.3" fully extended
- Adjustable tilt – -2° to 10°
- Rotates – ±45° | List adjustment – ±3°
- Cable management system through arms
- Load capacity – 150 lbs
- Black powder coat finish



FP-XMLPAB

Extra Medium Low Profile Flat Panel Articulating Mount

- Holds most 32" – 52" flat panels
- Maximum mounting hole pattern – 600mm x 400mm
- Low profile depth of 1.5" when collapsed and 16.2" fully extended
- Adjustable tilt – -2° to +10°
- Rotates – ±45° | List adjustment – ±3°
- Integrated cable management system
- Integrated level
- Load capacity - 100 lbs
- Black powder coat finish



FP-MLPAB

Medium Low Profile Flat Panel Articulating Mount

- Holds 27" – 42" flat panels
- Max. flat panel hole pattern – 400mm x 400mm
- Low profile depth of 1.6" when collapsed and 16.4" fully extended
- Adjustable tilt – -2° to +10°
- Rotates – ±45° | List adjustment – ±3°
- Integrated cable management system
- Integrated level
- Load capacity - 55 lbs
- Black powder coat finish





LCD-2537B

Multi-Configurable Medium Flat Panel Articulating Mount

- Holds 25" – 37" flat panels
- Max. extension from wall - 14"
- Accommodates flat panels with 75, 100, 200 and 100 x 200 mm VESA hole patterns
- Adjustable -5° to +20° tilt
- Rotates 240° at the elbow joint (Double arm configuration)
- Rotates 160° at the wall | Rotates 240° at the panel
- Load capacity - 50 lbs
- Black powder coat finish



Multi-Configuration Options with Parts Provided



LCD-1B

Multi-Configurable Small Flat Panel Articulating Mount

- Holds 10" – 23" flat panels
- Accommodates flat panels w/ 75 or 100mm VESA hole patterns
- Max. extension from wall – 15"
- Adjustable -5° to +20° tilt
- Rotates 240° at the elbow joint (Double arm configuration)
- Rotates 160° at the wall | Rotates 240° at the panel
- Load capacity - 25 lbs | Black powder coat finish



LCD-1 | SAME AS ABOVE EXCEPT WITH SILVER FINISH

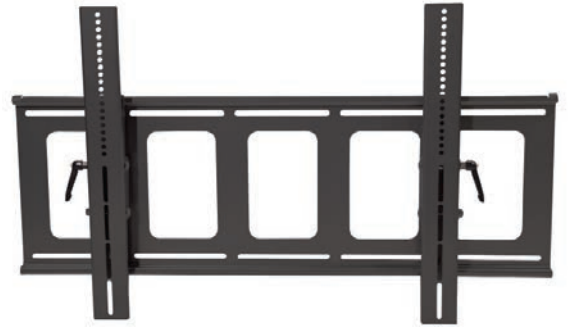


HELPFUL HINT: The suggested TV size ranges provided are primarily a guide and not meant to be the final deciding factor when choosing a mount. Check your TV manufacturers specifications for the VESA mounting hole pattern and weight of the TV to help determine all your options.

PDS-LFTB

Large Flat Panel Tilt Mount

- Holds 42" – 90" flat panels
- Maximum mounting hole pattern – 850mm x 530mm
- Adjustable -5° to +15° tilt
- Distance from wall to back of the flat panel – 2.6"
- Load capacity – 180 lbs
- Black powder coat finish



PDS-LFT | SAME AS ABOVE EXCEPT WITH SILVER FINISH

FP-LDSB

Large Flat Panel Digital Signage & Menu Board Mount

- Holds 42" - 90" flat panels in portrait or landscape
- Maximum mounting hole pattern – 810mm x 530mm (810mm x 810mm with included extensions)
- Adjustable -5° to +15° tilt lockable in 5° increments
- Sectional wall plate can be integrated with multiple FP-LDSB's to create a video wall using DS-BP
- Distance from wall to back of flat panel – 2.5" (2.6" w/ extensions) | Utilizes tamper resistant hardware
- Load capacity – 180 lbs | Black powder coat finish



* DS-BP Shown with two FP-LDSB

* Perfect for Menu Boards!

DS-BP | 12" WALL PLATE EXTENSION

FP-XMFTB

Extra Medium Flat Panel Tilt Mount

- Holds 32" – 52" flat panels
- Maximum mounting hole pattern – 616mm x 400mm
- Adjustable -5° to +15° tilt
- Distance from wall to back of the flat panel – 2.3"
- Utilizes tamper resistant hardware
- Load capacity – 120 lbs
- Black powder coat finish



FP-XMFT | SAME AS ABOVE EXCEPT WITH SILVER FINISH



FP-MFTB

Multi-Just™ Medium Flat Panel Tilt Mount

- Holds 27" – 42" flat panels
- Maximum mounting hole pattern – 415mm x 345mm
- Adjustable -5° to +15° tilt
- Vertical height adjustment – 1"
- List adjustment – ±3°
- Installer friendly kickstand
- Distance from wall to back of the flat panel – 2.3"
- Load capacity – 100 lbs
- Black powder coat finish



LCD-MID-FTB

Medium Flat Panel Tilt Mount

- Holds 27" – 42" flat panels
- Maximum mounting hole pattern – 410mm x 340mm
- Adjustable -5° to +15° tilt
- Distance from wall to back of the flat panel – 2.4"
- Accommodates multiple double gang boxes
- Load capacity – 100 lbs
- Black powder coat finish



FP-SFTB

Small Flat Panel Tilt Mount

- Holds 10" – 23" flat panels
- Accommodates flat panels with 75 or 100mm VESA hole patterns
- Adjustable -5 to +15° tilt
- Distance from wall to back of the flat panel – 1.7"
- Utilizes tamper resistant hardware
- Load capacity – 25 lbs / Black powder coat finish



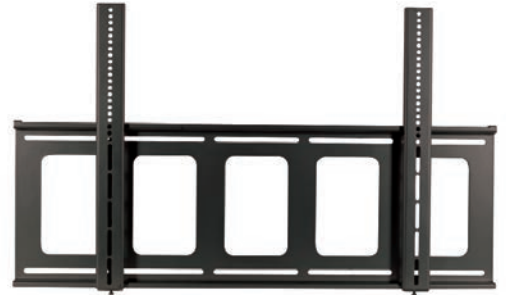
FP-SFT | SAME AS ABOVE EXCEPT WITH SILVER FINISH

HELPFUL HINT: The suggested TV size ranges provided are primarily a guide and not meant to be the final deciding factor when choosing a mount. Check your TV manufacturers specifications for the VESA mounting hole pattern and weight of the TV to help determine all your options.

FP-LFB

Large Flat Panel Flush Mount

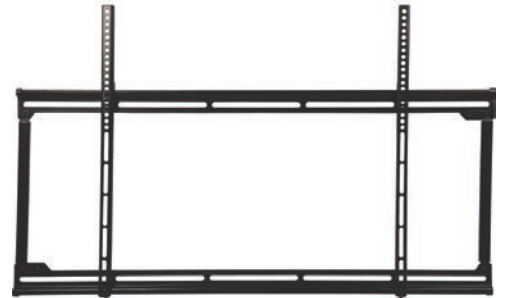
- Holds 42" – 90" flat panels
- Distance from wall to the back of the flat panel - 1.4"
- Maximum mounting hole pattern – 850mm x 500mm
- Utilizes tamper resistant hardware
- Accommodates multiple double gang boxes
- Load capacity – 180 lbs
- Black powder coat finish



FP-LFVB

Large Flat Panel Flush Mount - Ultra Low Profile

- Holds 42" – 70" flat panels
- Maximum mounting hole pattern – 890mm x 540mm
- Distance from wall to back of the flat panel – 0.85"
- Utilizes tamper resistant hardware
- Load capacity – 150 lbs
- Black powder coat finish



FP-LFV | SAME AS ABOVE EXCEPT WITH SILVER FINISH

DS-CH

Digital Media Player & Micro Form Factor PC Holder

- Allows for the secure attachment of a digital media player, or micro form factor PC, to a wall or ceiling mount
- Attaches to mounting rails, in landscape or portrait positions, to better hide behind the flat panel
- Utilizes tamper resistant hardware
- Works with VMP models FP-LDSB, PDS-LCB, PDS-LFTB and FP-LFB, as well as most other manufacturers' mounts
- Interior dimensions – 11" x 7" x 2.375"
- Black powder coat finish



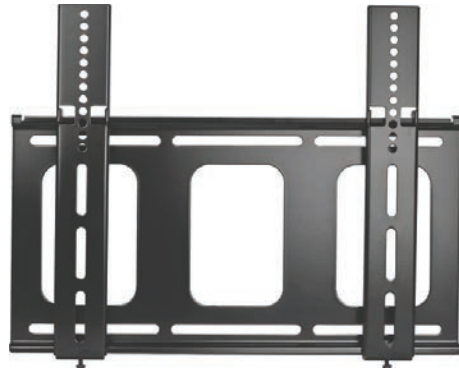
* DS-CH shown with FP-LDSB



LCD-MID-FB

Medium Flat Panel Flush Mount

- Holds 27" – 42" flat panels
- Maximum mounting hole pattern – 410mm x 340mm
- Distance from wall to back of the flat panel – 1"
- Accommodates multiple double gang boxes
- Utilizes tamper resistant hardware
- Load capacity – 125 lbs
- Black powder coat finish



FP-MFB

Medium Flat Panel Flush Mount - Ultra Low Profile

- Holds 27" – 42" flat panels
- Maximum mounting hole pattern – 440mm x 330mm
- Distance from wall to back of the flat panel – 0.7"
- Utilizes tamper resistant hardware
- Load capacity – 100 lbs
- Black powder coat finish

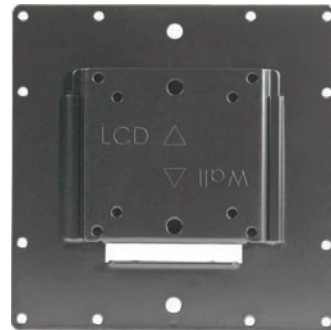


FP-MF | SAME AS ABOVE EXCEPT WITH SILVER FINISH

FP-SFB

Small Flat Panel Flush Mount

- Holds 10" – 30" flat panels
- Accommodates flat panels with 75, 100, 200 or 100 x 200mm VESA hole patterns
- Quick connect/disconnect design
- Distance from wall to back of the flat panel – 0.5"
- Utilizes tamper resistant screws to provide extra security
- Load capacity – 50 lbs
- Black powder coat finish



PDS-LCB

Large Flat Panel Ceiling Mount

- Holds 37" - 90" flat panels
- Maximum mounting hole pattern - 860mm x 500mm
- Mast telescopes 23" - 35"
- Rotates 360° | Adjustable 0° - 15° tilt
- Cable management through the center of the mast
- Utilizes tamper resistant hardware
- Load capacity - 180 lbs
- Black powder coat finish



PDS-LC | SAME AS ABOVE EXCEPT WITH SILVER FINISH

PDS-LCM2B

Dual Large Flat Panel Ceiling Mount Adaptor

- Holds 37" - 90" flat panels
- Adapts PDS-LCB (sold separately) to accommodate a second flat panel
- Maximum mounting hole pattern - 860mm x 500mm
- Rotates 360°
- Adjustable 0° - 15° tilt
- Combined load capacity of PDS-LCB & PDS-LCM2B - 380 lbs
- Black powder coat finish



** Shown with PDS-LCB (Sold Separately)*

PDS-LCHB

Large Flat Panel Ceiling Mount - Head Only

- Holds 37" - 90" flat panels
- Maximum flat panel hole pattern - 860mm x 500mm
- Rotates 360°
- Adjustable 0° - 15° tilt
- Uses standard 1.5" NPT masting
- Load capacity - 180 lbs
- Black powder coat finish

*** Perfect for upgrading existing monitors and flat panels w/o having to replace pre-existing 1.5" NPT masting**





HELPFUL HINT: The suggested TV size ranges provided are primarily a guide and not meant to be the final deciding factor when choosing a mount. Check your TV manufacturers specifications for the VESA mounting hole pattern and weight of the TV to help determine all your options.

LCD-MID-CB

Medium Flat Panel Ceiling Mount

- Holds 27" – 42" flat panels
- Maximum mounting hole pattern - 410mm x 340mm
- Mast telescopes 23" – 35"
- Rotates 360° / Adjustable -5° to +20° tilt
- Cable management through the center of the mast
- Load capacity – 100 lbs
- Black powder coat finish



LCD-MID-CM2B

Dual Medium Flat Panel Ceiling Mount Adaptor

- Holds 27" – 42" flat panels
- Adapts LCD-MID-CB (sold separately) to accommodate a second flat panel
- Maximum mounting hole pattern – 410mm x 340mm
- Adjustable -5° to +20° tilt
- Combined load capacity of LCD-MID-C and LCD-MID-CM2 – 200 lbs
- Black powder coat finish

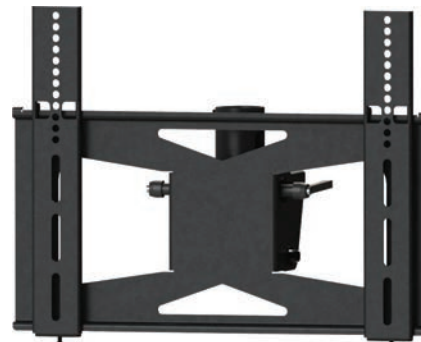


* Shown with LCD-MID-CB (Sold Separately)

LCD-MID-CHB

Medium Flat Panel Ceiling Mount - Head Only

- Holds 27" – 42" flat panels
- Maximum mounting hole pattern - 410mm x 340mm
- Rotates 360° | Adjustable -5° to +20° tilt
- Uses standard 1.5" NPT masting
- Load capacity – 100 lbs | Black powder coat finish



* Perfect for upgrading existing monitors and flat panels w/o having to replace pre-existing 1.5" NPT masting

LCD-2537CB

Medium Flat Panel Ceiling Mount

- Holds 25" – 37" flat panels
- Accommodates flat panels with 75, 100, 200 or 100 x 200mm VESA hole patterns
- Mast telescopes 18" – 30"
- Rotates 360° at mast / Rotates 240° at panel
- Adjustable -5° to +20° tilt
- Load capacity - 75 lbs / Black powder coat finish

EXT-A | ACTS AS AN INLINE SPLICE TO EXTEND THE DROP LENGTH OF THE LCD-2537CB BY UP TO 28" (See Page 33)



LCD-1CB

Small Flat Panel Ceiling Mount

- Holds 10" – 23" flat panels
- Accommodates flat panels with 75 or 100 mm VESA hole patterns
- Mast telescopes 17" – 27"
- Rotates 360° at mast / Rotates 240° at panel
- Adjustable -5° to +20° tilt
- Clip based cable management system
- Load capacity - 25 lbs | Black powder coat finish

LCD-1C | SAME AS ABOVE EXCEPT WITH SILVER FINISH

EXT-B | ACTS AS AN INLINE SPLICE TO EXTEND THE DROP LENGTH OF THE LCD-1CB BY UP TO 28" (See Page 33)



LCD-CM2B

Dual Small Flat Panel Ceiling Mount Adaptor

- Holds 10" – 23" flat panels
- Adapts LCD-1CB (sold separately) to accommodate a second flat panel with 75 or 100mm VESA hole patterns
- Adjustable -5° to +20° tilt | Rotates 240° at panel
- Combined load capacity of LCD-CM2B and LCD-1CB - 50 lbs
- Black powder coat finish

HELPFUL HINT: The suggested TV size ranges provided are primarily a guide and not meant to be the final deciding factor when choosing a mount. Check your TV manufacturers specifications for the VESA mounting hole pattern and weight of the TV to help determine all your options.



* Shown with LCD-1CB (Sold Separately)



SCM-1

Suspended Ceiling Adaptor

- For use with 2' x 2' or 2' x 4' suspended ceiling grids
- Can be used with standard 1.5" NPT pipe or VMP ceiling masts | Includes 20 feet of tie wire
- Four (4) integrated standard electrical KO's
- Includes 3" threaded coupler pipe
- Includes ceiling mast finishing ring
- Load capacity - 75lbs | White powder coat finish



SCM-2

Suspended Ceiling Replacement Tile

- For use with 2' x 2' or 2' x 4' suspended ceiling grid
- Unit can be rotated for 9 possible mounting location options
- Can be used with standard 1.5" NPT pipe or VMP ceiling masts
- Includes 30 feet of tie wire
- Four (4) integrated standard electrical KO's
- Includes 3" threaded coupler pipe & ceiling mast finishing ring
- Load capacity - 200lbs | White powder coat finish



CP-1

Ceiling Plate For Standard 1.5" NPT Pipe

- Universal ceiling flange works with all manufacturers' mounting systems when using standard 1.5" NPT pipe
- Provides base for ceiling installations
- Load Capacity - 380 lbs. | Black powder coat finish

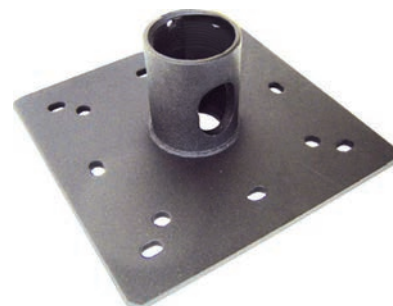


CP-2 | SAME AS ABOVE EXCEPT FOR USE WITH 1" NPT PIPE AND A LOAD CAPACITY OF 250 LBS.

CP-1PT

Ceiling Plate For Standard 1.5" NPT Pipe w/ Cable Pass-Through

- Universal ceiling flange works with all manufacturers' mounting systems when using standard 1.5" NPT pipe
- Cable pass-through for easy cable management
- Provides base for ceiling installations
- Load Capacity - 380 lbs. | Black powder coat finish



IBA-1

I-Beam Adaptor

- Adapts ceiling mounts to clamp to an I-Beam
- Works with all manufacturers' mounting systems when using 1.5" NPT pipe
- Accommodates 2.25" to 12" flange widths
- Accommodates maximum flange height of 1"
- Load Capacity – 250 lbs. | Black powder coat finish



CCA-1

Cathedral Ceiling Adaptor

- Designed for angled ceiling installations and works with all manufacturers' mounting systems when using standard 1.5" NPT pipe
- Adjustable 0 - 45° Tilt
- Load Capacity – 180 lbs.
- Black powder coat finish



UA-1

Unistrut® Adaptor

- Adapts ceiling mounts to work with Unistrut® up to 1.625"
- Works with all manufacturers' mounting systems when using 1.5" NPT pipe
- Load Capacity – 180 lbs.
- Black powder coat finish



TCA-1

Truss Ceiling Adaptor

- Works with a wide variety of truss types
- Maximum circular dimensions – 3" OD
- Maximum rectangular dimensions – 3" x 3"
- Works with 1.5" NPT pipe and all VMP ceiling masts
- Cable pass throughs for cable management
- Load capacity – 180 lbs | Black powder coat finish

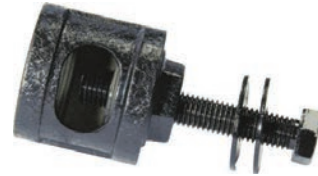




AK-1PT

1.5" NPT Pipe Coupler/Adaptor w/ Cable Pass-Through

- Serves to couple 2 sections of threaded 1.5" NPT pipe
- Can be used to adapt LCD-2537CB to enable use with standard 1.5" NPT pipe
- Black powder coat finish
- Load Capacity – 250 lbs.



EXT-1830 (SHOWN)

1.5" NPT Telescoping Extension Pipe - Adjustable 18" - 30"

- Works w/ any manufacturers' ceiling mounts which use 1.5" NPT pipe
- Works w/ VMP ceiling mounts adapted to use 1.5" NPT pipe
- Black powder coat finish



EXT-0609 | ADJUSTABLE FROM 6" - 9"

EXT-1218 | ADJUSTABLE FROM 12" - 18"

EXT-4872 | ADJUSTABLE FROM 48" - 72"

EXT-A

Extension Pipe

- Acts as an in-line splice to extend drop length of LCD-2537CB by up to 28" (can be cut to desired length)
- 31" tempered steel mast | Black powder coat finish



EXT-B | SAME AS ABOVE EXCEPT WORKS WITH LCD-1CB

SCFR-1

Suspended Ceiling Finishing Ring Kit

- Finishing ring to clamp around 1.5" NPT pipe
- Includes an adaptor for VMP ceiling masts that are not 1.5" NPT pipe | Chrome finish



LCD-2B

Small Flat Panel Desk Mount

- Holds 10" – 23" flat panels
- Accommodates flat panels with 75 or 100mm VESA hole patterns
- Rotates 360° at base
- Adjustable -5° to +30° tilt
- Force arm has adjustable 0° to 60° forward tilt
- Can be attached as a clamp-on or bolt through mount with parts provided
- Load capacity - 25 lbs
- Black powder coat finish



LCD-PA

Pole Adaptor

- For use with LCD-1 and LCD-2537
- Adapts round or square poles to accept mount
- Stainless steel straps adjust to fit poles from 4" to 10" in diameter
- Silver powder coat finish



AP-2B

300mm x 300mm VESA Adaptor Plate

- Adapts a VESA 200mm plate to accommodate a VESA 300mm x 300mm hole pattern
- Black powder coat finish



AP-1B

400mm x 200mm VESA Adaptor Plate

- Adapts a VESA 200mm plate to accommodate a VESA 400mm x 200mm hole pattern
- Black powder coat finish



AP-1 | SAME AS ABOVE EXCEPT WITH SILVER FINISH

FLEXIBLE. ADAPTABLE. RELIABLE.
 Everything you need in a mount.
 Our articulating mounts offer low profile flexibility and the reliability you've come to expect.
 FP-MLPAB
 EXTRA MEDIUM LOW PROFILE FLAT PANEL ARTICULATING WALL MOUNT
 CLICK HERE FOR MORE INFORMATION | FP-MLPAB



EH-VB40 - VERTICAL WALL RACK

STRAIGHT UP AWESOME!

VMP'S NEW ERVR SERIES OF VERTICAL WALL RACKS ARE NOW SHIPPING... [CLICK HERE FOR MORE INFORMATION](#)



CELEBRATING

1994 - 2024



18" ~ 30"



DVR-LB1

DVR Lockbox

- Interior dimensions 21" W x 21" D x 8" H
- Vented w/ fan for additional thermal management
- Interlocking lift off lid
- Key locked hinged front door
- Black static resistant powder coat finish



DVR-LB3

Low Profile DVR / Storage Lockbox

- Interior dimensions 17.2" W x 21" D x 5" H
- Key locked hinged front door
- Interlocking lift off lid
- Multiple vents with removable vent blockers for active or passive thermal management
- Single fan included w/ mounting location for second fan
- Black static resistant powder coat finish

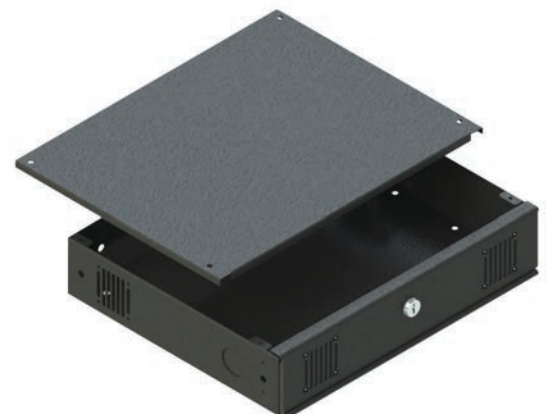
* Stand alone or rack mountable on 2 or 4 posts with a 3 RU overall height



DVR-MB1

Mobile/Rack Mount DVR Lockbox

- Interior dimensions 17" W x 13.8" D x 3" H
- Lockbox is mountable on 4 sides for mobile applications
- Rack mountable with a 2U overall height (3.5")
- Removable lid secured with tamper proof hardware
- Multiple vents with removable vent blockers for active or passive thermal management
- Single fan included and mounting locations for up to four fans (DVRMB1FAN)
- Key locked hinged front door
- Mounting strips included for DVR in mobile applications
- Black static resistant powder coat finish





DVR-WA

DVR Lockbox Wall Mounting Arms

- Works with the DVR-LB1 and DVR-LB3 to mount lockbox to 16" on center studs
- Load capacity – 50 lbs
- Black static resistant powder coat finish



**DVR-WA shown with DVR-LB1 (Sold Separately)*



DVR-LB1FAN

Replacement Fan for DVR-LB1 and DVR-LB3

- Air flow – 96 CFM | Noise level – 43dBA
- Power – 110VAC / .28A / 25W
- Includes power cord and mounting hardware
- Black Finish



DVR-MB1FAN

Replacement Fan for DVR-MB1

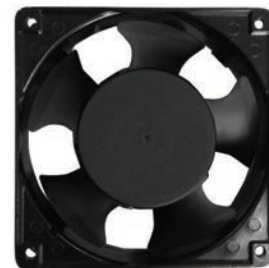
- Air flow – 10 CFM | Noise level – 28dBA
- Power – 110VAC / .05A / 6W
- Includes power cord and mounting hardware
- Black Finish



DVR-QFAN

Low Noise Replacement Fan for DVR-LB1 and DVR-LB3

- Air Flow – 51CFM | Noise Level – 25dBA
- Power – 110VAC / .09A / 10W
- Includes power cord and mounting hardware
- Black Finish



DVRLB-LOCK

Replacement Lock and 2 Keys for DVR-LB1, DVR-LB3 and DVR-MB1



DVRLB-KEYS

Two Replacement Keys for DVR-LB1, DVR-LB3 and DVR-MB1



FRM SERIES

Non-Penetrating Roof Mounts

- For use w/ DBS, off-air antenna, satellite internet systems, point to point CCTV and other wireless signal transmissions
- Holds up to eight 8" x 8" x 16" standard concrete blocks to anchor
- Galvannealed steel construction
- Dark gray weather resistant powder coat finish

FRM-125 | 60" MAST WITH 1.25" O.D.

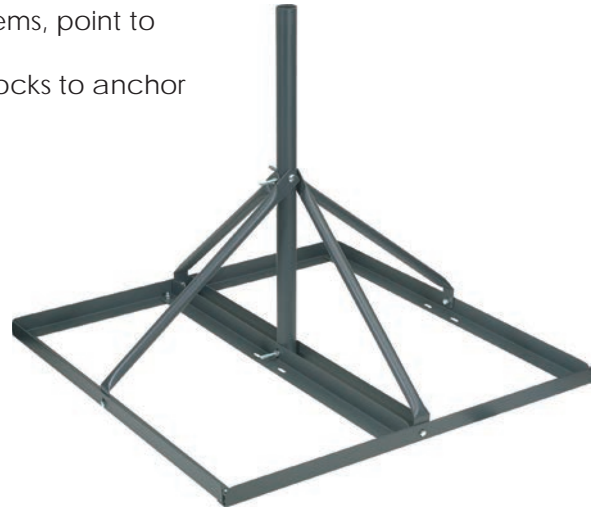
FRM-166 | 30" MAST WITH 1.66" O.D.

FRM-200 | 30" MAST WITH 2" O.D.

FRMA | 2" TO 2.375" ADAPTOR FOR FRM-200

FRM-MAT | RUBBER MAT (36.75" X 42" X 0.125")

* Protective membrane between FRM & roof surface



PRM-2

Non-Penetrating Pitched Roof Mount

- Holds up to eleven 8" x 8" x 16" standard concrete blocks to anchor
- Accommodates 18" and 24" DBS/DSS dishes
- Galvannealed steel construction
- Adjustable dish mounting plate
- Includes pitch pad kit
- Dark gray weather resistant powder coat finish

* Satellite dish and J Pipe not included



TR SERIES

Heavy Duty Tripods

- Tripods hold masts up to 1.75" OD
- Includes a pitch pad kit and universal mast clamp

* Installer friendly front facing feet

TR-36 | 36" HEAVY DUTY TRIPOD

TR-60 | 60" HEAVY DUTY TRIPOD

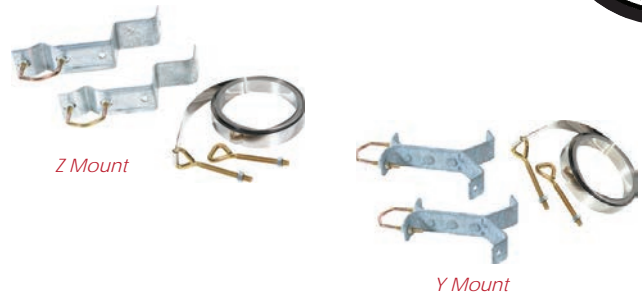




Z-MOUNT & Y-MOUNT

Chimney Mounts

- Accommodates 1.25" to 1.66" antenna or DBS pipe
- Includes 0.75" by 18' anodized steel straps
- Sold in pairs



WB-6

6" Wall Mount

- Accommodates 1.25" to 1.66" antenna or DBS pipe
- U bolt mast holder with 6" clearance | Sold in pairs



GU-3

Swivel Bracket

- Accommodates 1.25" to 3" antenna or DBS pipe
- Wall bracket mounts antenna or DBS pipe 3" off wall



BR-4XD

Heavy Duty 4" Wall Mount

- Accommodates 1.25" to 1.66" antenna or DBS pipe
- 3" clearance | Sold in pairs



P-6

Vent Pipe Mount

- Mounting attachment for vent pipes 2.75" to 5" O.D.
- Accommodates 1.25" to 1.66" antenna or DBS pipe | Sold in pairs



GEM-4060

Adjustable Gable End Antenna Mount

- Mounting bracket adjusts from 40" to 60" (left to right)
- Holds up to a 1.5" antenna mast



PM-LPMB

Low Profile Projector Mount

- Fits projectors with mounting holes inside 14.5" dia.
- Low 2.625" profile (includes the mounting feet)
- Adjustable tilt - $\pm 20^\circ$ / Adjustable pitch - $\pm 15^\circ$
- Adjustable yaw (rotation) - $\pm 180^\circ$ (360° total)
- Cable management through the center of the mount
- Ceiling plate and mounting screws included
- Uses standard 1.5" NPT masting
- Load capacity - 75 lbs
- Black powder coat finish



EXT-03F | 3" FIXED EXTENSION MAST – BLACK

* Please see page 33 for additional mast extension options

CH-002B

Wall Mount Electronic Component Shelf

- Can be used for holding a single device or stacked for multiple components such as DVD players, CD players, DVRs and HD receivers
- Shelf dimensions – 18" W x 13" D
- Black tempered glass shelf
- Can be used in conjunction with any TV wall mount to design an entertainment center
- Load capacity – 25 lbs
- Black powder coat finish



* Two Ch-002B's shown stacked (Sold Separately)



STRAP

Safety/Security Strap

- 1" width by 10' length
- Saw tooth cinching buckle
- Black sturdy woven nylon blend construction





SP-001

Speaker Wall/Ceiling Mount

- Swivels 180° | Twists 180°
- Load capacity – 10 lbs
- Black powder coat finish
- Sold in pairs



SP-007

Speaker Wall Mount

- Swivels 180°
- Plate size 6" x 6"
- Load capacity – 12 lbs
- Black powder coat finish
- Sold in pairs



SP-010

Adjustable Speaker Wall Mount

- Adjusts to fit speakers with 6.5" to 11.5" depth
- Swivels 240° | Adjustable tilt 0° to 15°
- Load capacity – 20 lbs
- Black powder coat finish | Sold in pairs



SP-200W

Multi-Configurable Speaker Mount

- Virtually limitless number of configurations for the wall or ceiling and full range of tilt, twist and swivel
- Mounts on back of speaker
- White high impact plastic | Sold in pairs
- Load capacity - 12 lbs



NOTES

NOTES

A		E CONT'D		E CONT'D		I	
AK-1PT	33	EREN-42E**	5	ERWEN-9E**	9	IBA-1	32
AP-1	34	EREN42E1K**	6	ERWEN-12E**	9		
AP-1B	34	EREN3FANKIT	21	ERWEN-12E750**	10	L	
AP-2B	34	EREN-BP	7	ERWEN-15E**	10	LCD-1	23
		ERENPD-18	7	ERWEN-F22E**	10	LCD-1B	23
B		ERENPD-27	7	ERWENF22E-2FANKIT	11	LCD-1C	30
BR-4XD	39	ERENPD-42	7	ERWENFAN	11	LCD-1CB	30
		EREN-PS6	20	ERWEN2FANKIT	11	LCD-2537B	23
C		ERENSD-18	7	ERWENPD-6	11	LCD-2537CB	30
CCA-1	32	ERENSD-27	7	ERWENPD-9	11	LCD-2B	34
CH-002B	40	ERENSD-42	7	ERWENPD-12	11	LCD-CM2B	30
CP-1	31	ERENSL	21	ERWENPD-15	11	LCD-MID-CB	29
CP-1PT	31	ERENSL2	21	ERWENPD-F22E	11	LCD-MID-CHB	29
CP-2	31	ERENDSSD-18	7	ERWENSD-6	11	LCD-MID-CM2B	29
		ERENDSSD-27	7	ERWENSD-9	11	LCD-MID-FB	27
		ERENDSSD-42	7	ERWENSD-12	11	LCD-MID-FTB	25
D		ERENVCM-27	7	ERWENSD-15	11	LCD-PA	34
DS-BP	24	ERENVCM-42	7	ERWENSD-F22E	11		
DS-CH	26	ER-HCM1	19	EXT-03F	40	P	
DVRLB-KEY	37	ER-HCM2	19	EXT-0609	33	P-6	39
DVRLB-LOCK	37	ER-HWB1	18	EXT-1218	33	PDS-LC	28
DVR-LB1	36	ER-HWB2	18	EXT-1830	33	PDS-LCB	28
DVR-LB1FAN	37	ER-LBAR10	19	EXT-4872	33	PDS-LCHB	28
DVR-LB3	36	ER-LBAR-RA	19	EXT-A	33	PDS-LCM2B	28
DVR-MB1	36	ER-LCD1017	18	EXT-B	33	PDS-LFT	24
DVR-MB1FAN	37	ER-LIGHT-118	21			PDS-LFTB	24
DVR-QFAN	37	ER-RS1032-100	21	F		PM-LPMB	40
DVR-WA	37	ER-RS1032-50	21	FP-LDSB	24	PRM-2	38
		ER-RS1224-100	21	FP-LFB	26		
E		ER-RS1224-50	21	FP-LFV	26	S	
ER-1	12	ER-S1	16	FP-LFVB	26	SCFR-1	33
ER-1-4PKIT	12	ER-S1U4P	18	FP-MF	27	SCM-1	31
ER-148	12	ER-S1U4P-2240	18	FP-MFB	27	SCM-2	31
ER-148-4PKIT	12	ER-S1UV	16	FP-MFTB	25	SP-001	41
ER-184	12	ER-S1V	17	FP-MLPAB	22	SP-007	41
ER-184-4PKIT	12	ER-S2CM	17	FP-SFB	27	SP-010	41
ER-1B	20	ER-S2U	16	FP-SFT	25	SP-200W	41
ER-1BV	20	ER-S2UV	16	FP-SFTB	25	STRAP	40
ER-2B	20	ER-SS1U	17	FP-XLWAB	22		
ER-2BV	20	ER-TCFAN	21	FP-XMFT	24	T	
ER-4B	20	ER-VR1U	15	FP-XMFTB	24	TCA-1	32
ER-8B	20	ER-VR2U	15	FP-XMLPAB	22	TR-36	38
ER-8RSA	17	ER-VR4U	15	FRM-125	38	TR-60	38
ER-BP1	20	ERVWC-2U20**	8	FRM-166	38		
ER-BP2	20	ERVWC-2U36**	8	FRM-200	38	U, V, W, Y, Z	
ER-CASTERS	20	ERVWC-5U20**	8	FRMA	38	UA-1	32
ER-DRCM1	19	ERVWC-5U36**	8	FRM-MAT	38	VWS	14
ER-DRCM2	19	ERVWC2FANKIT	8			WB-6	39
EREN-18**	4	ER-W24	14	G		Y-MOUNT	39
EREN-18E**	4	ER-WR8	15	GEM-4060	39	Z-MOUNT	39
EREN-27**	5	ER-WR12	15	GU-3	39		
EREN-27E**	5	ERWEN-6E**	9				
EREN-27E1K**	6						



VIDEO MOUNT PRODUCTS **NOTHING HOLDS UP BETTER**

MOUNTING SOLUTIONS FOR AV, COMMUNICATIONS & SECURITY



VIDEOMOUNT.COM

345 LOG CANOE CIRCLE, STEVENSVILLE, MD 21666 | 410.643.6390 | INFO@VIDEOMOUNT.COM