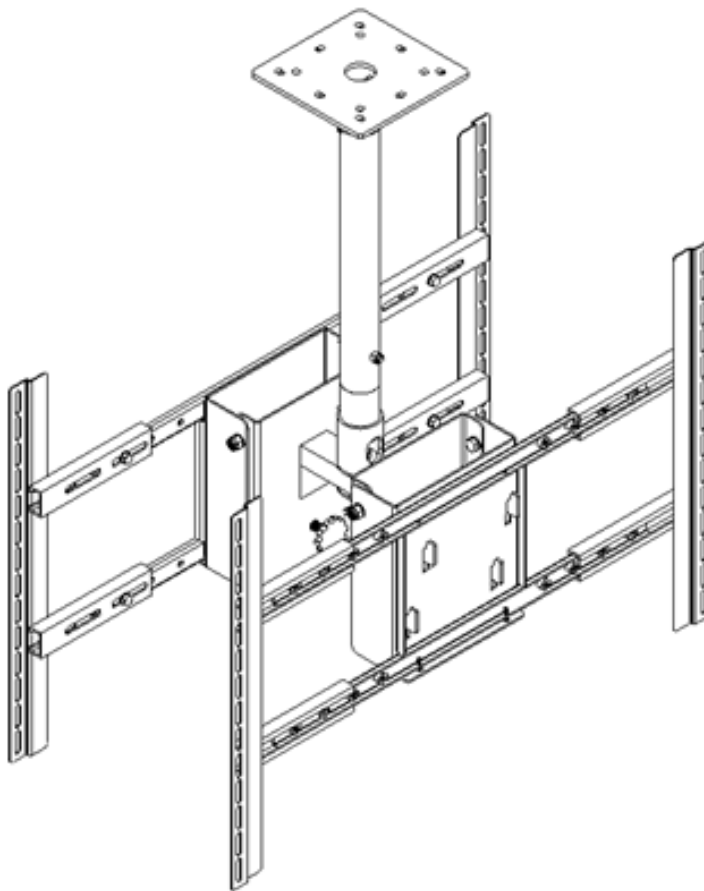


WMP

VIDEO MOUNT PRODUCTS

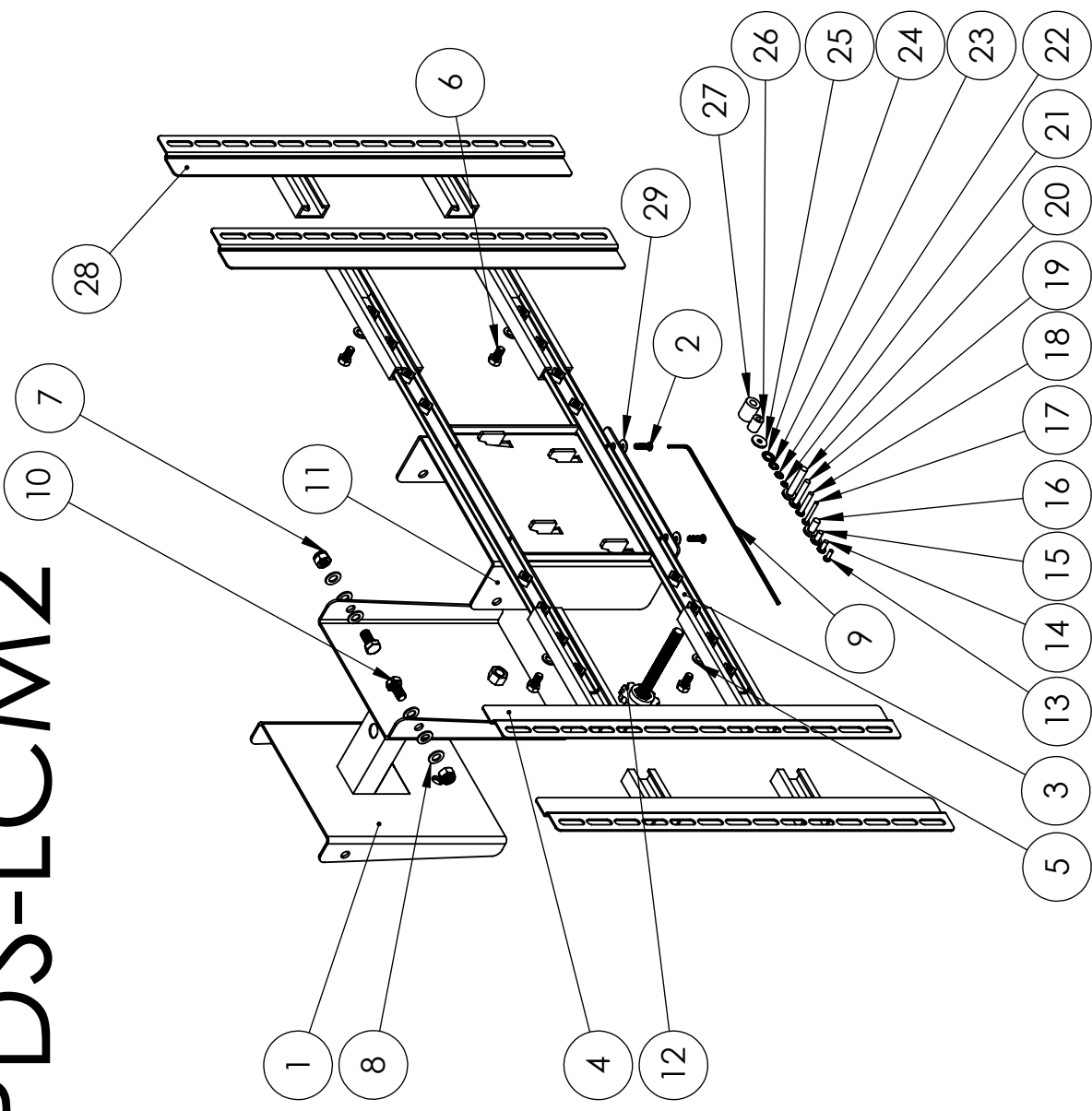
Instruction Sheet For:

PDS-LCM2B



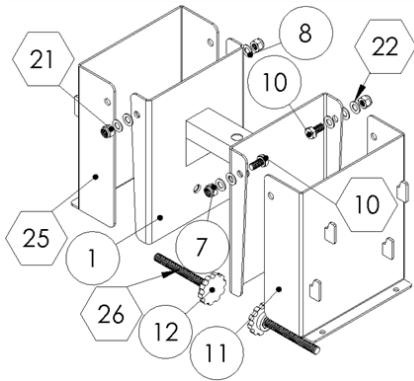
For more information, please contact us at:
345 Log Canoe Circle, Stevensville, Maryland 21666
Toll Free: 877.281.2169 Phone: 410.643.6390 Fax: 410.643.6615
www.videomount.com

PDS-LCM2

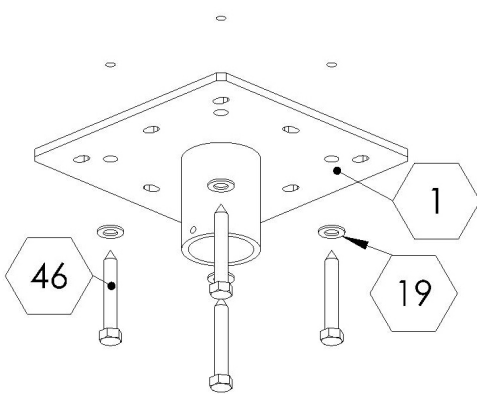


ITEM NO.	DESCRIPTION	QTY.
1	Mounting Adaptor	1
2	Security Screw M5*P0.8*L20	2
3	Mounting Bracket	1
4	Extension Bracket A	2
5	Washer $\phi 5/16'' \times \phi 16 \times T1.6$	4
6	Screw 5/16" - 18UNC*L5/8"	4
7	Nylon Nut M10*P1.5	2
8	Washer $\phi 3/8'' \times \phi 19 \times T1.6$	6
9	Long Allen Key M4	1
10	Screw M10*P1.5*L25	2
11	Adjusting Bracket	1
12	Adjusting Screw M12*P1.75*L100	1
13	Screw M4*P0.7*L12	4
14	Screw M5*P0.8*L12	4
15	Screw M6*P1.0*L12	4
16	Screw M8*P1.25*L16.5	4
17	Screw M4*P0.7*L30	4
18	Screw M5*P0.8*L30	4
19	Screw M6*P1.0*L35	4
20	Screw M8*P1.25*L40	4
21	Lock Washer M4	4
22	Lock Washer M5	4
23	Lock Washer M6	4
24	Lock Washer M8	4
25	Washer $\phi 5.5 \times \phi 18 \times T2$	4
26	Spacer M6	4
27	Spacer M8	4
28	Extension Bracket B	2
29	Washer $\phi 5 \times \phi 15 \times T1.0$	2

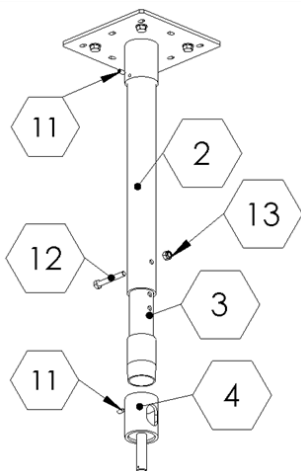
WARNING: The installer of these products must verify that the mounting surface, ceiling or wall, will safely support the combined weight of all attached equipment and hardware. Video Mount Products will not be held liable for the improper use or installation of its products.



Step 2 : Attaching the adjusting brackets



Step 3: Attaching the ceiling plate to the ceiling



Step 4 : Attaching the ceiling mast to the ceiling plate

Step 1

Before starting, lay out all parts to your mount and match them to the parts list provided. Verify that you have all your parts before attempting to assemble the mount.

Note: For these instructions PDS-LCB part numbers have hexagons around their numbers and PDS-LCM2B part numbers have circles around their part numbers.

Step 2

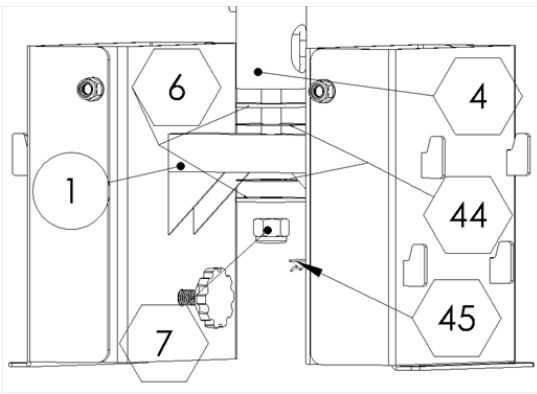
Attach the adjusting brackets (11) PDS-LCM2B / (25) PDS-LCB to the mounting adaptor (1) PDS-LCM2B using the M10 screws (10) PDS-LCM2B / (10) PDS-LCB, washers (8) PDS-LCM2B / (22) PDS-LCB and nylon nuts (7) PDS-LCM2B / (21) PDS-LCB. Insert the adjusting screw (12) PDS-LCM2B / (26) PDS-LCB into the welded nuts located in the mounting adaptor (1) PDS-LCM2B **Note: You will have to thread the first adjusting screw all the way down to provide space to thread in the second screw. Once the second screw is started you can back off the first to the desired tilt angle.**

Step 3

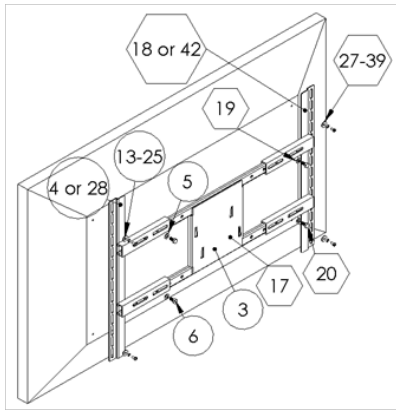
Mark the ceiling or desired mounting surface in preparation of installation of ceiling plate (1) PDS-LCB. If mounting to wooden ceiling joists, pre drill pilot holes using a 7/32" drill bit. Attach the ceiling plate (1) PDS-LCB to the wooden ceiling joist using the 5/16" by 2.5" long lag screw (46) PDS-LCB and washer (19) PDS-LCB. **WARNING: Please verify that your mounting surface will support the combined weight of your mount, mounting hardware, and flat panel. Also verify that the mounting surface is safe to drill through. Please note only mounting hardware for mounting to wooden ceiling joists will be provided with the unit. If mounting to a surface other than wooden ceiling joists then other hardware will be required. If in doubt or uncertain about any of the above, please contact a professional installer.**

Step 4

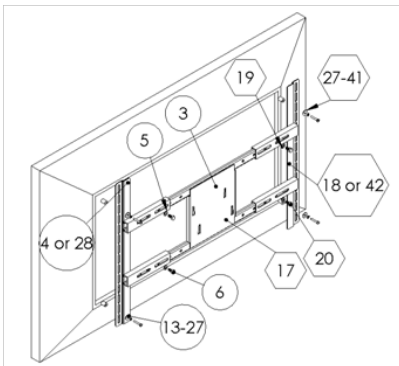
Screw the outer mast (2) PDS-LCB into the ceiling plate (1) PDS-LCB. Secure the outer mast by tightening the brake screw (11) PDS-LCB into the thread hole in the side of the ceiling plate. Attach the inner mast (3) PDS-LCB to the outer mast using the M8 screw (12) PDS-LCB and nylon nut (13) PDS-LCB. Attach the pipe couple (4) PDS-LCB to the bottom of the inner mast and secure the pipe couple with a brake screw (11) PDS-LCB.



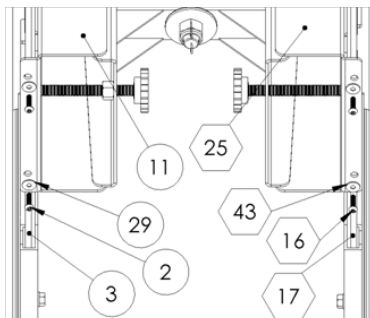
Step 5: Attaching the mounting adaptor to the pipe couple



Step 6A: Attaching the mounting rails to the flat panel (holes are not recessed)



Step 6B: Attaching the mounting rails to the flat panel (holes are recessed)



Step 7: Attaching the mounting brackets to the adjusting brackets

Step 5

Attach the mounting adaptor (1) PDS-LCM2B to the pipe couple (4) PDS-LCB using the metal washers (6) PDS-LCB, PVC washers (44) PDS-LCB and nylon nut (7) PDS-LCB. After tightening down the nylon nut completely insert the cotter pin (45) PDS-LCB through the hole in the bottom of the screw of the pipe couple.

Step 6

Slide either extension brackets A or B (18) or (42) PDS-LCB / (4) or (28) PDS-LCM2B onto the mounting plate (17) PDS-LCB / (3) PDS-LCM2B and match up the slots on the extension brackets to the holes on the back of your TV. Determine the correct screw size and if you need to use washers, lock washers, or spacers. **Note: Spacers are used for TVs with recessed hole patterns.** Secure the TV to the extension brackets (18) or (42) PDS-LCB / (4) or (28) PDS-LCM2B using the appropriate hardware (27) through (41) PDS-LC / (13) through (27) PDS-LCM2B. Secure extension brackets with 5/16" screw (20) PDS-LCB / (6) PDS-LCM2B and washer (19) PDS-LCB / (5) PDS-LCM2B.

Step 7

Lift the mounting bracket (3) PDS-LCM2B / (17) PDS-LC onto the adjusting bracket (11) PDS-LCM2B / (25) PDS-LCB. **WARNING: This step requires at least two people to prevent possible injury.** Secure the plates together using the M5 security screw (2) PDS-LCM2B / (16) PDS-LCB and washer (29) PDS-LCM2B / (43) PDS-LCB.

Please verify that all nuts and screws are securely tightened.



Enjoy Your Mount!

WARNING: The installer of these products must verify that the mount surface, ceiling or wall, will safely support the combined weight of all attached equipment and hardware. Video Mount Products will not be held liable for the improper use or installation of its products.